



知识更趣味 · 学习更轻松



专注 平行线 | ZXPXX.COM



尼克官方微信公众号  
服务热线:400-005-6666

二年级数学 尼克思维空间  
计算天天练



平行线教育 出品

# 尼克思维空间

在计算无所不在的数学知识中,如果孩子的计算正确率更高而且速度更快,那么在遨游数学知识海洋的过程中就能更胜一筹、快人一步哦!

尼克爱数学之《计算天天练》,  
让尼克陪孩子一起练计算,  
如果想提升孩子的计算能力,  
一定要让孩子坚持做练习哦!  
只要孩子坚持做,  
孩子一定可以成为一名优秀的“计算小达人”。

学思维、练思维就到尼克思维空间!  
关注官方公众号,更多优质福利资料以及课程  
等你领取哦!



## 写给尼克小勇士的话:



1、每册《计算天天练》共24页计算练习题,  
每天一页对应了24天的习题量,各位小勇士  
一定要坚持练习哦!



2、一页的计算时间控制在3分30秒之内并且全对  
的,就是一名合格的计算小达人!所以在保证计  
算正确率的前提下也要注意提高计算的速度呢!



3、每天的错题及时整理在“错题回收处”  
并且别忘记再做一遍哦!一周的计算题  
做完之后要在“本周计算总结”表格中记  
录一下,这样就可以看到各位小勇士本  
周的计算表现啦!



□算练习

用时：

扣除：

$70+35=$	$30-13=$	$66-35=$
$50+23=$	$67+29=$	$47-40=$
$73-41=$	$96-67=$	$26+16=$
$72-70=$	$87-18=$	$35+46=$
$17+57=$	$70+10=$	$57+43=$
$69+31=$	$14+12=$	$44+27=$
$40+27=$	$86-60=$	$90-67=$
$69+10=$	$26+45=$	$85-60=$
$50-15=$	$44-27=$	$34+36=$
$93-59=$	$85-27=$	$86-19=$



笔算闯关

扣除：

$59-41+2$	$47+31+10$	$77-64+67$
$77+17-20$	$77+15-54$	$13-7+61$
$47+29-18$	$7+26-8$	$17+80-47$



错题回收处



□算练习

用时：

扣除：

$50-20=$	$20+31=$	$26+16=$
$34-10=$	$19-17=$	$22-20=$
$58+34=$	$70+16=$	$43-40=$
$70-40=$	$86-19=$	$44+27=$
$34+40=$	$78+19=$	$78-19=$
$74+20=$	$36+39=$	$81-34=$
$88+10=$	$87-18=$	$63+28=$
$72-47=$	$14+12=$	$18+40=$
$82-37=$	$49-40=$	$30+31=$
$37+43=$	$72-54=$	$28-10=$



笔算闯关

扣除：

$23+41+9$	$7+26-28$	$27+36+3$
$81-25-35$	$77-49+67$	$25+29-17$
$77+15-54$	$96-33-53$	$7+61-21$



错题回收处



□算练习

用时:

扣除:

$44+29=$	$86-40=$	$80-18=$
$23+77=$	$70+26=$	$65+10=$
$58-34=$	$98-40=$	$70-47=$
$50+27=$	$36+16=$	$61-19=$
$74-50=$	$85-29=$	$26+57=$
$59-10=$	$31-13=$	$88-40=$
$14+86=$	$34+50=$	$23-20=$
$29+33=$	$36+40=$	$64+29=$
$64-29=$	$77-20=$	$81-37=$
$59+39=$	$72-53=$	$36+36=$



笔算闯关

扣除:

$44-12+11$	$30+23+31$	$20-16+33$
$35+60-23$	$55+6+10$	$48+28-15$
$30-15+67$	$35-21+11$	$4+80-15$



错题回收处



□算练习

用时:

扣除:

$82-41=$	$46+50=$	$54+39=$
$13+47=$	$61+19=$	$10+18=$
$66-63=$	$33-30=$	$94-60=$
$63-28=$	$86-37=$	$44-29=$
$66+30=$	$29+39=$	$94-80=$
$17+30=$	$67+26=$	$34+16=$
$31-16=$	$82-50=$	$50+32=$
$38+39=$	$33+30=$	$34-16=$
$23-20=$	$54-39=$	$30+44=$
$85-28=$	$15+10=$	$92-67=$



笔算闯关

扣除:

$55-14-31$	$67+2-52$	$1+99-68$
$49+23+11$	$50+46+2$	$80+12-9$
$88-83+48$	$70-36+24$	$63-40-1$



错题回收处





□算练习

用时:

扣除:

$65+20=$	$87-84=$	$76-47=$
$74-19=$	$91-22=$	$40+41=$
$73-44=$	$33-16=$	$66-19=$
$18+43=$	$37+34=$	$49+22=$
$21+79=$	$29+31=$	$97-23=$
$83-24=$	$97-90=$	$47-10=$
$81+10=$	$19+60=$	$35+36=$
$44+40=$	$29+70=$	$87-28=$
$91-10=$	$63-60=$	$75+17=$
$89-26=$	$71-53=$	$27+73=$



笔算闯关

扣除:

$7+56+20$	$97-36+32$	$77-1-41$
$59-16+19$	$98-66-3$	$17+80-47$
$13+15+4$	$77+17-20$	$77+11-54$



错题回收处



□算练习

用时:

扣除:

$3 \times 5 =$	$2 \times 8 =$	$84-26=$
$87-28=$	$5 \times 3=$	$64-18=$
$84-37=$	$48+28=$	$2 \times 9 =$
$39+46=$	$66+14=$	$42+58=$
$2 \times 4 =$	$39+54=$	$53-15=$
$29+39=$	$94-45=$	$92-75=$
$35-16=$	$30-14=$	$4 \times 9 =$
$82-13=$	$3 \times 8 =$	$75+25=$
$2 \times 2 =$	$51+29=$	$16+68=$
$24+47=$	$25+59=$	$3 \times 4 =$



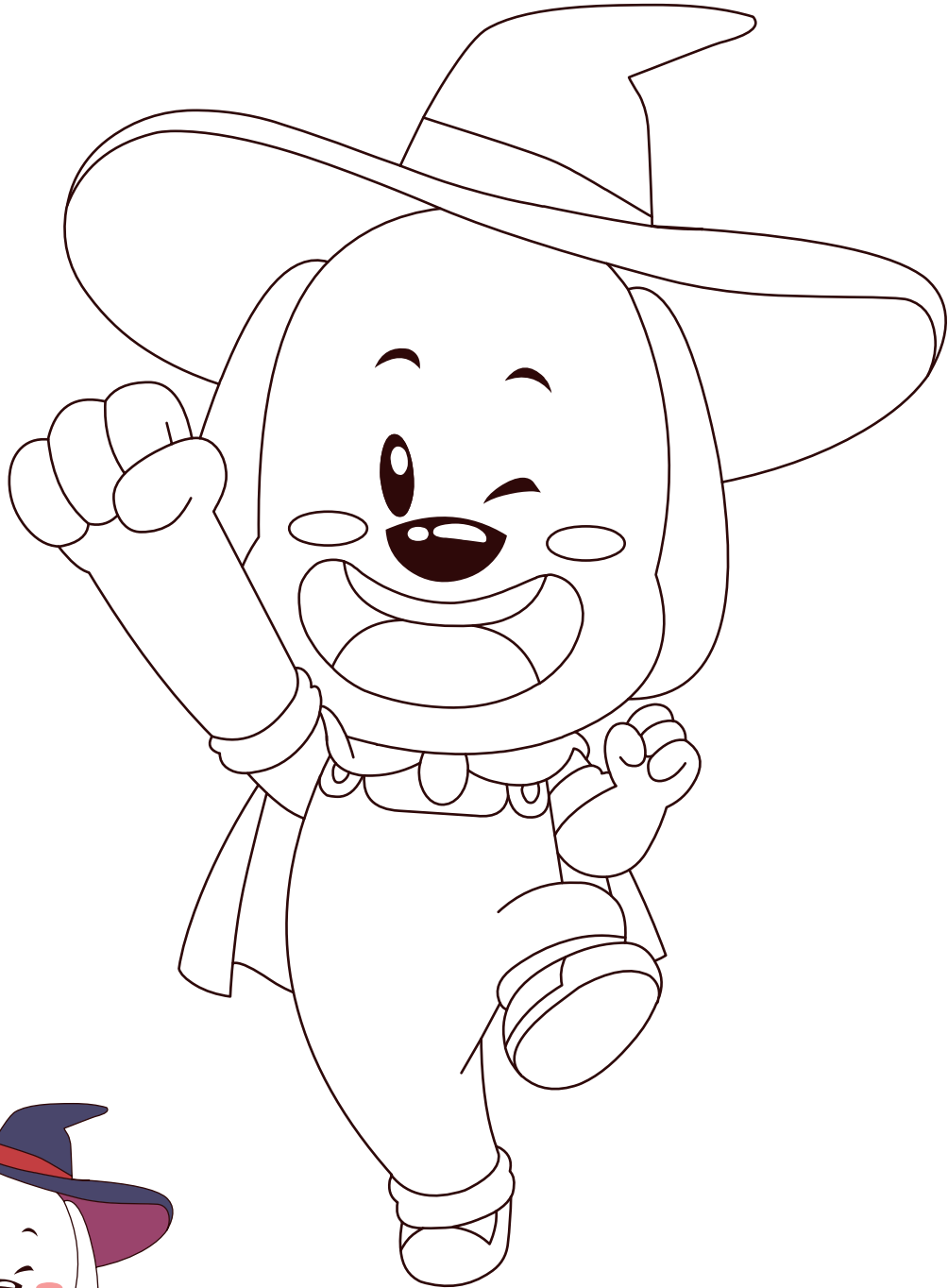
笔算闯关

扣除:

$11+56+10$	$6+86-69$	$81-16-3$
$10+75-29$	$41-4-28$	$37+33+20$
$44-12+11$	$67+2-52$	$95-6-62$



错题回收处



	□ 算		笔算
	用时	掉落	掉落
第1天			
第2天			
第3天			
第4天			
第5天			
第6天			
平 均			

家长评语：



□算练习

用时:

扣除:

$5 \times 7 =$	$34 + 46 =$	$5 \times 5 =$
$3 \times 2 =$	$66 + 19 =$	$43 - 20 =$
$80 - 16 =$	$5 \times 3 =$	$94 - 51 =$
$56 + 2 =$	$74 - 30 =$	$2 \times 4 =$
$19 + 47 =$	$51 - 20 =$	$4 \times 8 =$
$79 + 13 =$	$3 \times 4 =$	$74 + 19 =$
$6 + 82 =$	$2 \times 9 =$	$3 \times 3 =$
$91 - 16 =$	$73 - 47 =$	$83 - 60 =$
$2 \times 7 =$	$81 - 22 =$	$93 - 20 =$
$5 \times 2 =$	$3 \times 7 =$	$4 \times 5 =$



笔算闯关

扣除:

$77 + 15 - 54$	$99 - 21 - 32$	$6 + 42 + 29$
$7 + 26 - 8$	$19 + 21 + 30$	$59 - 33 + 46$
$77 - 64 + 67$	$94 - 79 - 3$	$43 + 43 + 5$



错题回收处



□算练习

用时:

扣除:

$3 \times 2 =$	$3 \times 5 =$	$38 + 56 =$
$4 \times 4 =$	$48 + 38 =$	$23 + 48 =$
$52 - 27 =$	$65 - 48 =$	$46 + 46 =$
$38 + 42 =$	$50 - 25 =$	$3 \times 9 =$
$29 + 19 =$	$3 \times 7 =$	$3 \times 6 =$
$5 \times 2 =$	$5 \times 4 =$	$76 - 49 =$
$4 \times 7 =$	$24 + 35 =$	$82 - 65 =$
$81 - 39 =$	$40 + 19 =$	$58 + 15 =$
$39 + 23 =$	$2 \times 7 =$	$75 - 58 =$
$5 \times 9 =$	$80 - 45 =$	$4 \times 2 =$



笔算闯关

扣除:

$13 - 7 + 61$	$72 - 17 - 37$	$35 + 60 - 23$
$17 + 80 - 47$	$36 + 16 + 22$	$30 - 15 + 67$
$74 - 12 - 11$	$95 - 71 - 11$	$2 + 56 + 8$



错题回收处



□算练习

用时:

扣除:

$3 \times 6 =$	$87 - 37 =$	$3 \times 7 =$
$83 - 37 =$	$33 + 39 =$	$4 \times 2 =$
$71 + 4 =$	$60 - 20 =$	$80 - 17 =$
$65 + 4 =$	$2 \times 9 =$	$5 + 42 =$
$61 - 23 =$	$2 \times 5 =$	$35 + 4 =$
$4 \times 5 =$	$55 - 39 =$	$74 - 56 =$
$3 \times 5 =$	$96 - 29 =$	$17 + 83 =$
$39 - 10 =$	$2 \times 7 =$	$69 + 28 =$
$76 - 52 =$	$3 \times 8 =$	$5 \times 9 =$
$4 \times 8 =$	$5 \times 5 =$	$3 \times 2 =$



笔算闯关

扣除:

$92 - 17 - 71$	$44 - 12 + 11$	$92 - 81 - 6$
$50 - 22 - 10$	$27 + 36 + 13$	$56 - 4 + 28$
$23 + 41 + 29$	$25 + 29 + 17$	$54 - 30 - 20$



错题回收处



□算练习

用时:

扣除:

$5 \times 8 =$	$67 - 29 =$	$4 \times 9 =$
$2 \times 9 =$	$71 - 13 =$	$31 - 10 =$
$26 + 3 =$	$2 \times 6 =$	$58 + 39 =$
$73 - 17 =$	$28 + 39 =$	$35 + 16 =$
$61 - 12 =$	$85 - 40 =$	$77 - 74 =$
$2 + 42 =$	$41 - 20 =$	$4 \times 5 =$
$2 \times 5 =$	$68 + 26 =$	$4 \times 2 =$
$5 \times 4 =$	$5 \times 9 =$	$82 - 10 =$
$84 - 37 =$	$5 \times 7 =$	$4 \times 7 =$
$58 - 39 =$	$2 \times 4 =$	$19 + 43 =$



笔算闯关

扣除:

$30 + 23 + 31$	$98 - 28 + 17$	$2 + 22 + 16$
$78 - 3 - 37$	$68 - 7 - 32$	$88 - 83 + 48$
$40 + 63 - 7$	$55 + 26 + 10$	$35 - 21 + 11$



错题回收处



□算练习

用时:

扣除:

$9 \times 2 =$

$4 \times 2 =$

$88 - 50 =$

$2 \times 3 =$

$53 - 10 =$

$79 + 11 =$

$3 \times 5 =$

$85 - 40 =$

$36 + 46 =$

$46 + 40 =$

$19 + 49 =$

$59 - 10 =$

$54 - 30 =$

$28 + 54 =$

$5 \times 6 =$

$94 - 50 =$

$8 \times 4 =$

$5 \times 5 =$

$50 + 42 =$

$6 + 31 =$

$94 - 36 =$

$4 \times 3 =$

$99 - 60 =$

$42 - 25 =$

$3 \times 9 =$

$5 + 25 =$

$2 \times 2 =$

$52 + 12 =$

$4 \times 4 =$

$5 \times 9 =$



笔算闯关

扣除:

$50 + 16 + 18$

$56 + 17 + 8$

$89 - 59 - 27$

$61 - 8 - 18$

$97 - 7 - 25$

$49 + 23 + 11$

$68 - 36 - 18$

$53 + 36 - 18$

$33 - 9 - 12$



错题回收处



□算练习

用时:

扣除:

$3 \times 8 =$

$67 - 30 =$

$5 \times 8 =$

$40 + 47 =$

$75 + 19 =$

$3 \times 7 =$

$97 - 70 =$

$74 - 36 =$

$90 - 66 =$

$36 + 34 =$

$2 \times 4 =$

$18 + 47 =$

$63 + 27 =$

$3 \times 9 =$

$37 + 39 =$

$41 - 20 =$

$94 - 45 =$

$62 - 48 =$

$27 + 70 =$

$32 + 39 =$

$4 \times 7 =$

$2 \times 7 =$

$88 - 50 =$

$4 \times 5 =$

$3 \times 4 =$

$2 \times 3 =$

$98 - 80 =$

$87 - 50 =$

$4 \times 6 =$

$43 - 10 =$



笔算闯关

扣除:

$67 + 23 - 78$

$9 + 19 + 29$

$78 - 16 + 8$

$30 + 45 - 69$

$98 - 45 - 15$

$67 + 17 + 3$

$35 + 41 + 1$

$46 + 16 + 4$

$12 + 49 - 11$



错题回收处



	□ 算		笔算
	用时	掉落	掉落
第1天			
第2天			
第3天			
第4天			
第5天			
第6天			
平 均			

家长评语：



□算练习

用时:

扣除:

$3 \times 8 =$

$40 - 23 =$

$5 \times 9 =$

$51 - 20 =$

$8 + 21 =$

$2 \times 9 =$

$29 + 37 =$

$74 + 4 =$

$4 \times 2 =$

$42 + 29 =$

$93 - 48 =$

$35 - 16 =$

$43 - 10 =$

$5 \times 2 =$

$14 + 49 =$

$2 \times 3 =$

$4 \times 7 =$

$26 + 54 =$

$2 \times 4 =$

$2 + 21 =$

$82 - 13 =$

$4 \times 9 =$

$5 \times 8 =$

$5 \times 5 =$

$60 - 28 =$

$33 - 10 =$

$3 \times 7 =$

$4 \times 6 =$

$70 - 10 =$

$29 - 10 =$



笔算闯关

扣除:

$72 + 17 + 18$

$89 - 59 - 27$

$70 - 36 + 2$

$99 + 199 + 2$

$20 + 56 + 28$

$46 - 13 + 27$

$97 - 19 - 27$

$84 + 9 - 26$

$48 + 29 - 18$



错题回收处



□算练习

用时:

扣除:

$2 \times 8 =$

$4 \times 8 =$

$5 \times 6 =$

$78 + 13 =$

$5 \times 8 =$

$30 + 34 =$

$85 - 50 =$

$69 + 19 =$

$41 - 30 =$

$40 - 30 =$

$97 - 80 =$

$80 - 20 =$

$46 + 36 =$

$43 - 20 =$

$40 + 45 =$

$3 \times 9 =$

$51 + 39 =$

$4 \times 9 =$

$3 \times 5 =$

$3 \times 3 =$

$5 \times 9 =$

$53 - 40 =$

$2 \times 7 =$

$3 \times 3 =$

$55 + 39 =$

$81 + 19 =$

$62 - 26 =$

$95 - 50 =$

$72 + 19 =$

$51 - 39 =$



笔算闯关

扣除:

$56 + 19 + 14$

$33 - 19 - 12$

$63 - 22 + 17$

$99 - 78 + 2$

$2 + 13 + 23$

$55 - 29 + 45$

$88 - 19 - 28$

$68 - 36 - 18$

$198 + 9 + 5$



错题回收处





□算练习

用时:

扣除:

$7 \times 7 =$

$5 \times 7 =$

$30 - 16 =$

$4 \times 9 =$

$62 - 50 =$

$54 + 12 =$

$70 + 25 =$

$39 + 39 =$

$26 + 11 =$

$17 + 70 =$

$64 + 28 =$

$92 - 64 =$

$94 - 67 =$

$54 - 50 =$

$4 \times 7 =$

$88 - 39 =$

$6 \times 8 =$

$9 \times 8 =$

$10 + 71 =$

$9 \times 9 =$

$81 - 39 =$

$3 \times 9 =$

$80 - 70 =$

$63 - 27 =$

$8 \times 5 =$

$45 - 20 =$

$2 \times 9 =$

$81 - 20 =$

$7 \times 5 =$

$29 + 57 =$



笔算闯关

扣除:

$52 + 7 + 18$

$174 - 99 - 9$

$72 - 11 + 34$

$18 + 19 + 7$

$45 + 18 - 25$

$38 - 18 + 48$

$13 + 6 + 10$

$47 - 27 + 39$

$66 + 99 + 34$



错题回收处



□算练习

用时:

扣除:

$4 \times 8 =$

$2 \times 8 =$

$81 - 39 =$

$87 - 28 =$

$9 \times 3 =$

$39 + 23 =$

$84 - 37 =$

$51 + 29 =$

$27 + 27 =$

$39 + 46 =$

$58 - 39 =$

$5 \times 9 =$

$24 + 47 =$

$63 - 27 =$

$6 \times 3 =$

$2 \times 9 =$

$25 + 59 =$

$84 - 27 =$

$5 \times 7 =$

$5 \times 3 =$

$75 - 19 =$

$35 - 16 =$

$42 + 58 =$

$19 + 39 =$

$82 - 13 =$

$29 + 39 =$

$5 \times 2 =$

$3 \times 6 =$

$9 \times 6 =$

$3 \times 7 =$



笔算闯关

扣除:

$33 - 23 + 69$

$67 + 23 - 78$

$47 - 35 + 63$

$97 - 45 + 35$

$30 + 45 - 69$

$45 - 44 + 48$

$59 - 33 + 46$

$5 + 90 - 81$

$98 - 35 + 27$



错题回收处



□算练习

用时:

扣除:

$3 \times 8 =$

$5 \times 8 =$

$86 - 20 =$

$60 + 31 =$

$69 + 27 =$

$80 - 40 =$

$75 - 47 =$

$24 - 10 =$

$28 + 57 =$

$60 - 23 =$

$30 + 25 =$

$70 - 47 =$

$34 + 30 =$

$50 + 14 =$

$37 - 19 =$

$3 \times 2 =$

$95 - 10 =$

$79 + 19 =$

$68 - 67 =$

$48 + 32 =$

$5 \times 4 =$

$36 - 20 =$

$5 \times 7 =$

$4 \times 3 =$

$73 + 17 =$

$4 \times 8 =$

$24 + 37 =$

$3 \times 9 =$

$58 - 10 =$

$4 \times 6 =$



笔算闯关

扣除:

$76 - 14 - 18$

$56 - 4 + 28$

$35 - 15 + 18$

$76 - 38 + 58$

$75 - 24 + 47$

$42 - 21 + 26$

$46 + 27 - 36$

$75 + 17 - 87$

$74 - 12 + 17$



错题回收处



□算练习

用时:

扣除:

$2 \times 6 =$

$91 - 14 =$

$9 \times 6 =$

$3 \times 8 =$

$46 + 29 =$

$27 - 20 =$

$42 + 30 =$

$13 + 49 =$

$47 + 29 =$

$99 - 40 =$

$62 - 27 =$

$39 + 36 =$

$44 - 40 =$

$70 - 52 =$

$82 - 60 =$

$30 + 40 =$

$7 \times 6 =$

$55 - 40 =$

$4 \times 6 =$

$5 + 71 =$

$6 \times 8 =$

$95 - 29 =$

$6 + 32 =$

$84 - 27 =$

$93 - 64 =$

$3 \times 9 =$

$75 - 19 =$

$8 \times 8 =$

$86 - 70 =$

$12 + 49 =$



笔算闯关

扣除:

$1 + 90 - 81$

$33 - 23 + 69$

$77 + 11 - 54$

$47 - 35 + 63$

$65 - 45 + 35$

$59 - 33 + 46$

$45 - 44 + 48$

$69 + 30 - 48$

$67 + 23 - 78$



错题回收处



	□ 算		笔算
	用时	掉落	掉落
第1天			
第2天			
第3天			
第4天			
第5天			
第6天			
平 均			

家长评语：



□算练习

用时:

扣除:

$3 \times 6 =$

$91 - 62 =$

$8 \times 6 =$

$42 + 38 =$

$81 - 65 =$

$86 - 50 =$

$37 + 33 =$

$40 + 46 =$

$28 + 57 =$

$79 - 30 =$

$40 + 54 =$

$23 + 58 =$

$54 - 20 =$

$50 - 39 =$

$46 - 20 =$

$19 + 59 =$

$2 \times 4 =$

$88 - 70 =$

$5 \times 4 =$

$67 + 23 =$

$5 \times 5 =$

$97 - 68 =$

$16 + 49 =$

$7 \times 7 =$

$73 - 14 =$

$91 - 60 =$

$84 - 17 =$

$2 \times 7 =$

$4 \times 3 =$

$73 - 56 =$



笔算闯关

扣除:

$59 + 10 + 9$

$73 + 24 - 18$

$45 - 31 - 1$

$91 - 43 - 47$

$56 - 21 + 36$

$21 + 22 + 16$

$34 + 18 + 18$

$22 + 28 - 17$

$82 - 63 - 1$



错题回收处



□算练习

用时:

扣除:

$2 \times 7 =$

$84 - 26 =$

$3 \times 3 =$

$66 + 14 =$

$29 + 19 =$

$4 \times 7 =$

$39 + 54 =$

$48 + 38 =$

$41 - 14 =$

$94 - 45 =$

$64 - 18 =$

$80 - 31 =$

$30 - 14 =$

$53 - 15 =$

$41 + 17 =$

$3 \times 6 =$

$4 \times 5 =$

$51 + 14 =$

$92 - 75 =$

$5 \times 8 =$

$96 - 47 =$

$52 - 27 =$

$65 - 48 =$

$86 - 67 =$

$38 + 42 =$

$50 - 25 =$

$60 + 19 =$

$5 \times 9 =$

$3 \times 7 =$

$94 - 15 =$



笔算闯关

扣除:

$88 + 99 + 12$

$98 - 35 + 27$

$12 + 13 + 31$

$67 - 18 - 32$

$76 - 12 + 8$

$79 - 19 - 38$

$64 - 27 + 18$

$5 + 88 - 8$

$66 + 7 + 15$



错题回收处



□算练习

用时:

扣除:

$4 \times 7 =$

$41 - 14 =$

$81 + 15 =$

$3 \times 8 =$

$80 - 31 =$

$76 - 38 =$

$31 + 69 =$

$95 + 2 =$

$64 - 48 =$

$16 + 17 =$

$15 + 71 =$

$14 + 60 =$

$58 - 39 =$

$94 - 15 =$

$3 \times 9 =$

$63 - 27 =$

$73 - 37 =$

$4 \times 3 =$

$4 \times 9 =$

$4 \times 8 =$

$73 + 24 =$

$84 - 27 =$

$3 \times 6 =$

$60 + 30 =$

$75 - 19 =$

$60 + 16 =$

$60 - 40 =$

$19 + 39 =$

$30 + 17 =$

$97 - 30 =$



笔算闯关

扣除:

$27 + 16 - 23$

$68 - 5 - 46$

$36 + 27 + 26$

$62 - 12 + 54$

$35 + 41 + 21$

$25 + 8 + 46$

$68 - 34 + 41$

$78 - 34 - 14$

$55 + 17 - 67$



错题回收处



□算练习

用时:

扣除:

$2 \times 7 =$

$25 + 34 =$

$6 \times 6 =$

$27 + 64 =$

$97 - 48 =$

$71 - 19 =$

$65 - 30 =$

$82 - 75 =$

$96 - 67 =$

$63 - 19 =$

$33 + 45 =$

$90 + 5 =$

$39 + 52 =$

$30 + 40 =$

$69 + 22 =$

$65 - 20 =$

$34 - 25 =$

$8 \times 4 =$

$72 - 69 =$

$71 - 23 =$

$82 - 44 =$

$5 \times 9 =$

$9 \times 9 =$

$46 - 27 =$

$4 \times 4 =$

$5 \times 7 =$

$8 \times 5 =$

$3 \times 5 =$

$71 + 19 =$

$24 + 67 =$



笔算闯关

扣除:

$47 + 29 - 18$

$29 + 59 - 30$

$46 + 27 - 36$

$76 - 14 - 18$

$10 + 68 - 39$

$56 - 4 + 28$

$76 - 38 + 58$

$59 + 31 - 51$

$75 - 24 + 47$



错题回收处



□算练习

用时:

扣除:

$3 \times 7 =$

$6 \times 7 =$

$39 + 39 =$

$60 + 36 =$

$41 + 40 =$

$89 - 70 =$

$41 - 25 =$

$62 - 10 =$

$84 - 70 =$

$80 - 23 =$

$40 - 13 =$

$34 + 48 =$

$18 + 20 =$

$82 - 56 =$

$54 - 18 =$

$60 - 28 =$

$30 - 10 =$

$93 - 34 =$

$42 - 29 =$

$20 + 19 =$

$17 + 34 =$

$42 + 40 =$

$3 \times 6 =$

$3 \times 4 =$

$3 \times 8 =$

$84 + 16 =$

$23 + 18 =$

$33 + 57 =$

$29 + 54 =$

$4 \times 8 =$



笔算闯关

扣除:

$38 + 34 - 59$

$82 - 69 + 77$

$30 + 45 - 69$

$51 + 29 - 67$

$46 - 26 + 14$

$1 + 90 - 81$

$74 - 59 + 20$

$81 + 13 - 44$

$47 - 35 + 63$



错题回收处



□算练习

用时:

扣除:

$13 + 59 =$

$7 \times 8 =$

$32 + 47 =$

$33 + 48 =$

$63 - 56 =$

$87 - 38 =$

$96 - 90 =$

$70 + 25 =$

$42 - 10 =$

$85 - 66 =$

$46 + 36 =$

$69 + 29 =$

$99 - 70 =$

$77 - 40 =$

$58 + 34 =$

$69 + 8 =$

$92 - 78 =$

$9 \times 4 =$

$55 + 34 =$

$7 \times 7 =$

$6 \times 7 =$

$8 \times 6 =$

$4 \times 9 =$

$76 - 17 =$

$9 \times 8 =$

$46 - 18 =$

$57 + 24 =$

$9 \times 6 =$

$62 - 50 =$

$7 \times 5 =$



笔算闯关

扣除:

$62 - 35 + 13$

$45 - 44 + 48$

$20 - 16 + 33$

$63 - 23 + 12$

$98 - 35 + 27$

$48 + 28 - 15$

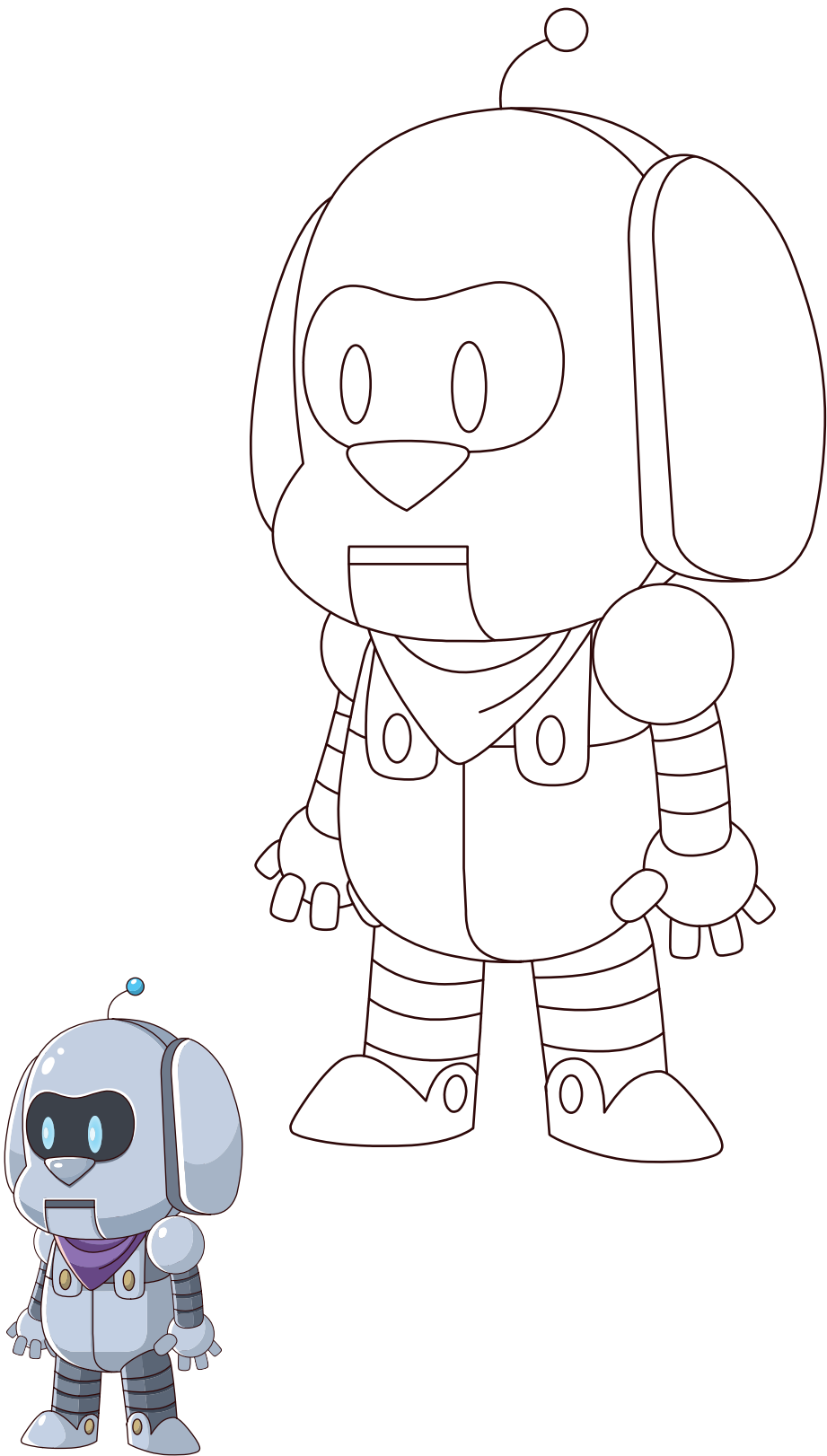
$52 - 17 + 19$

$5 + 88 - 8$

$4 + 80 - 15$



错题回收处



	□ 算		笔算
	用时	掉落	掉落
第1天			
第2天			
第3天			
第4天			
第5天			
第6天			
平 均			

家长评语：



月总结

啦啦啦！本月的任务完成了！购物车都装不下啦！

	□ 算		笔算
	用时	掉落	掉落
第1周			
第2周			
第3周			
第4周			
平 均			

家长评语：

个人总结：

教师评语：